



# Yours, mine, and ours – Connecting ourselves and the communities we belong to



Janice (Ginny) Redish

© 2004, Ginny Redish

## Topics for the talk

Definitions

How multi-community we each are

A bit of history

Some characteristics of communities

Language / communication

Connections



© 2004, Ginny Redish

## Community

A group of individuals with awareness  
of some unifying trait

The people living in a particular place  
and usually linked by common interests

A group sharing interests or beliefs



© 2004, Ginny Redish

## Community

A community is a group of people  
who share common interests,  
activities, and initiatives;  
who communicate regularly;  
and who derive benefit  
from their association.



© 2004, Ginny Redish

## Online Community

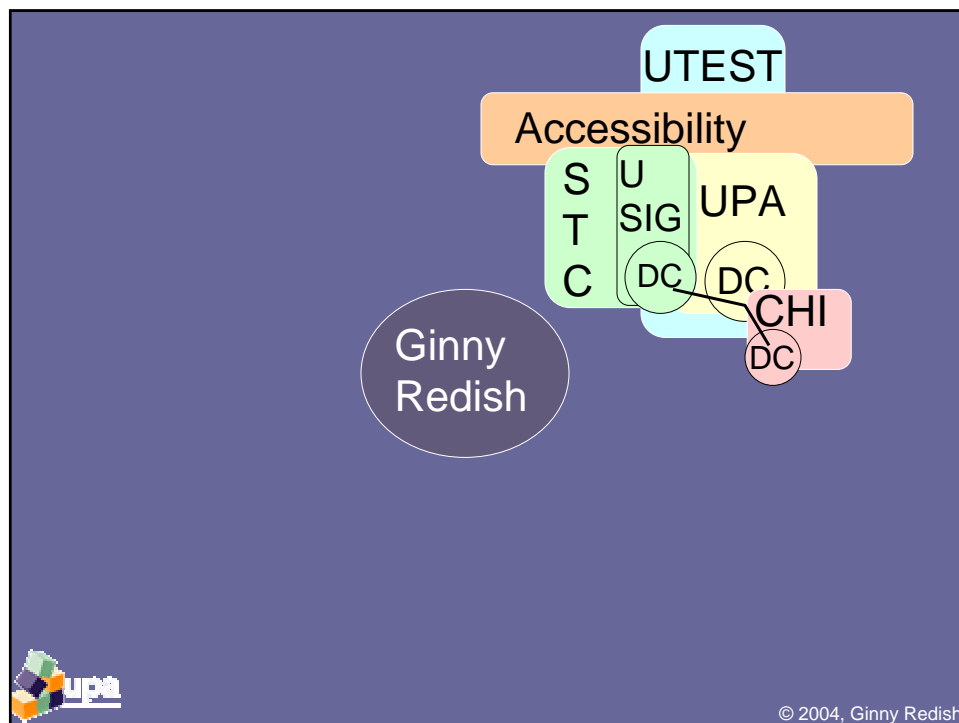
People  
Purpose  
Policies  
Computer systems

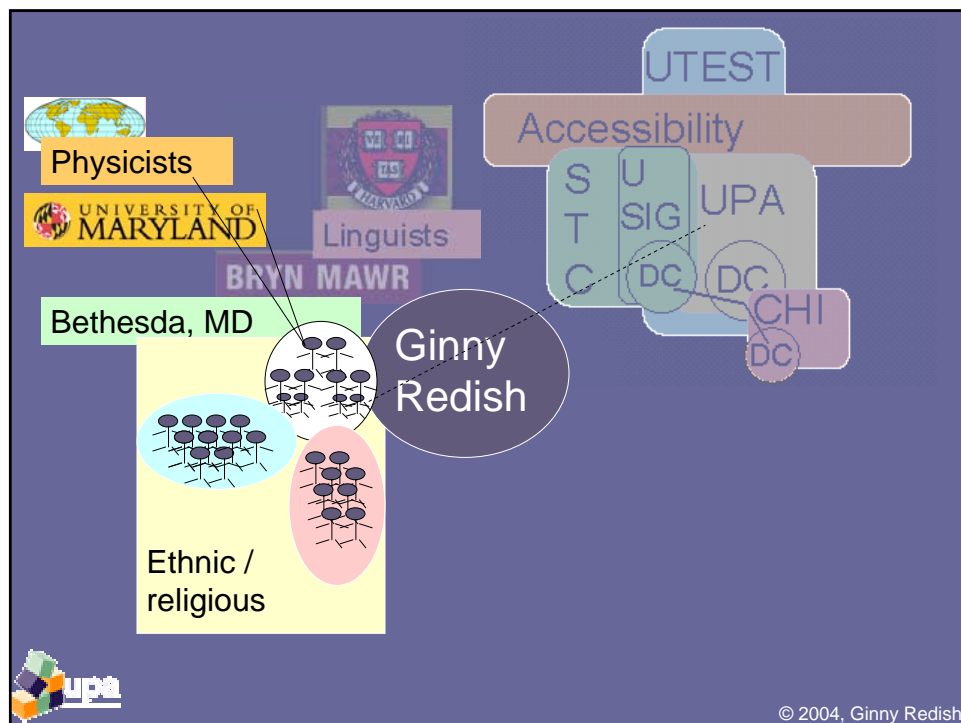
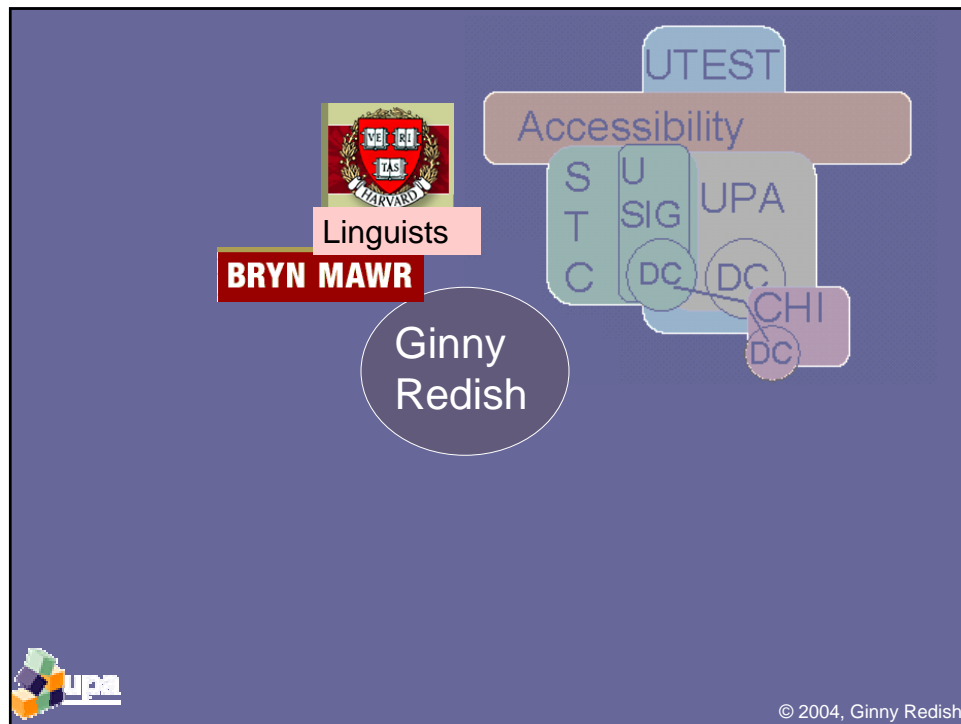


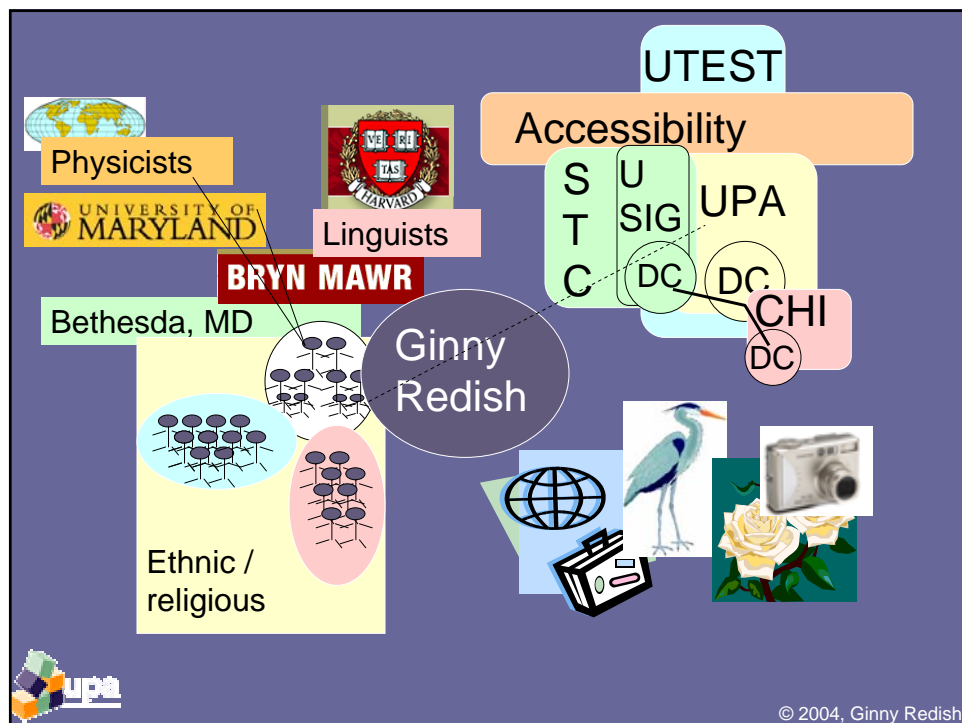
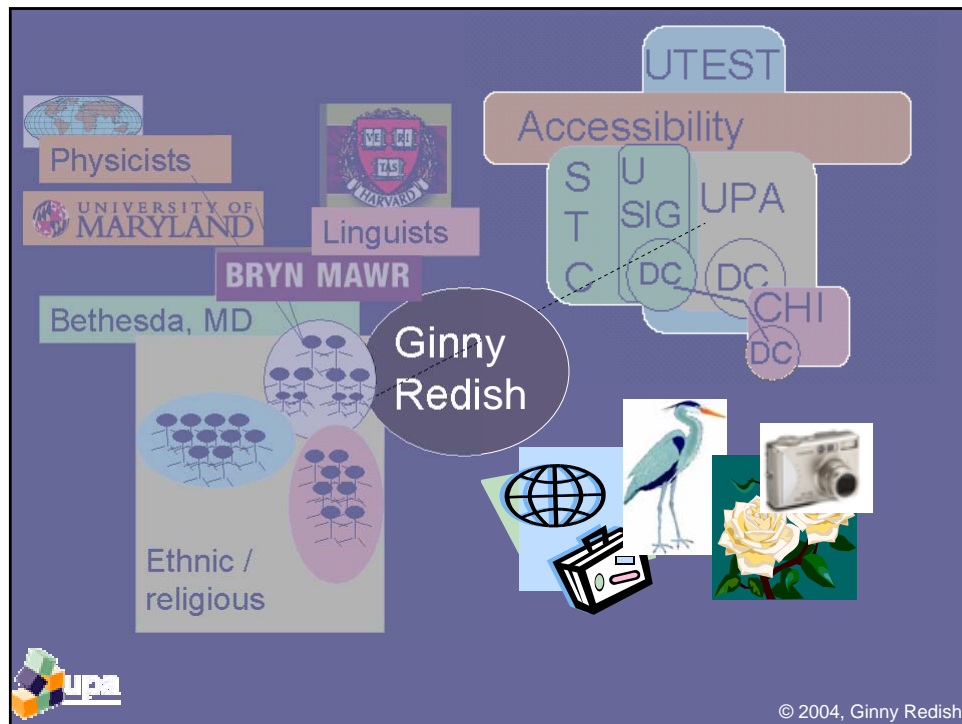
Jenny Preece  
*Online Communities*  
Wiley, 2000.



© 2004, Ginny Redish

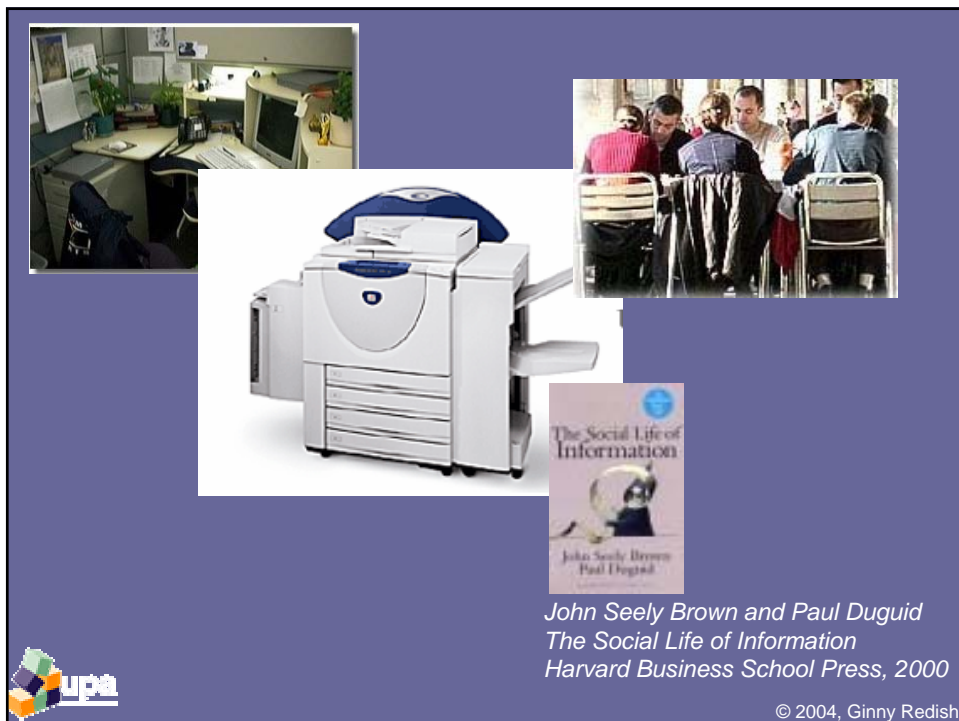


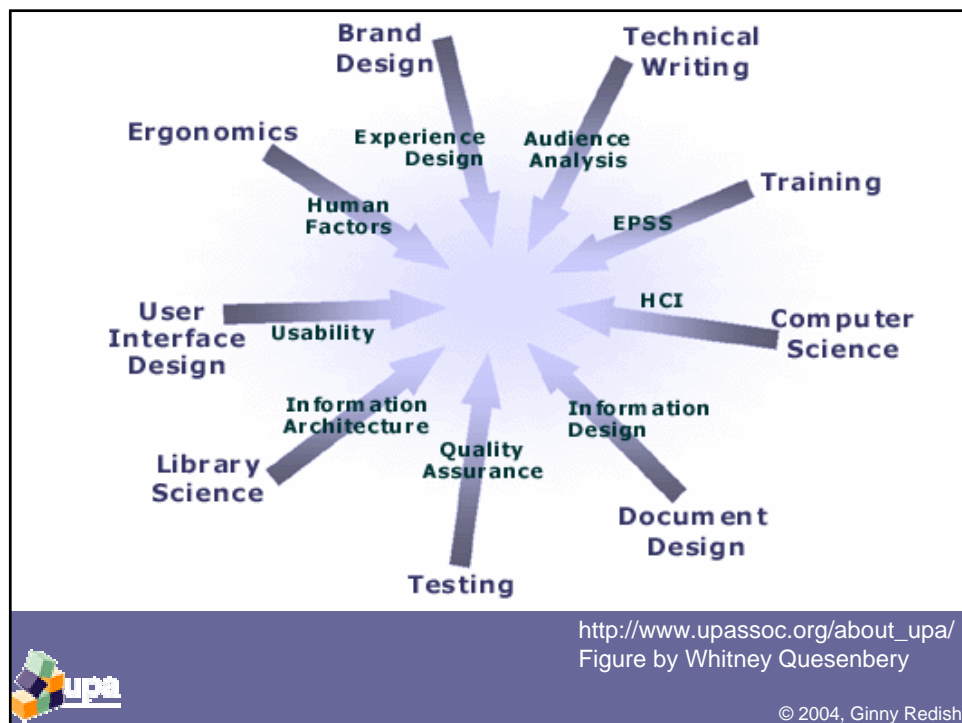
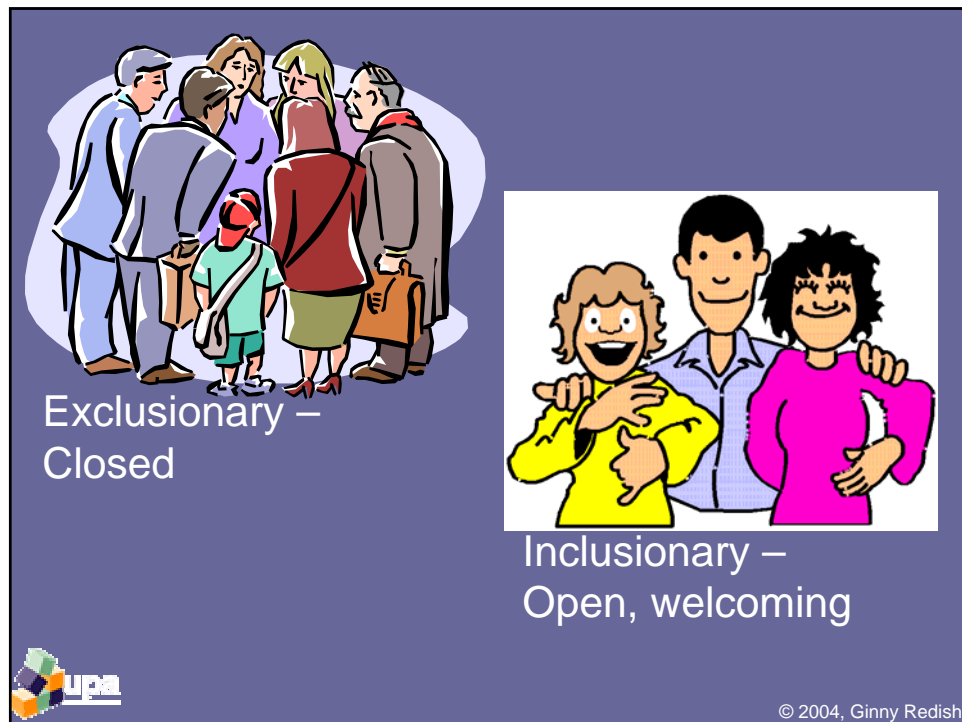


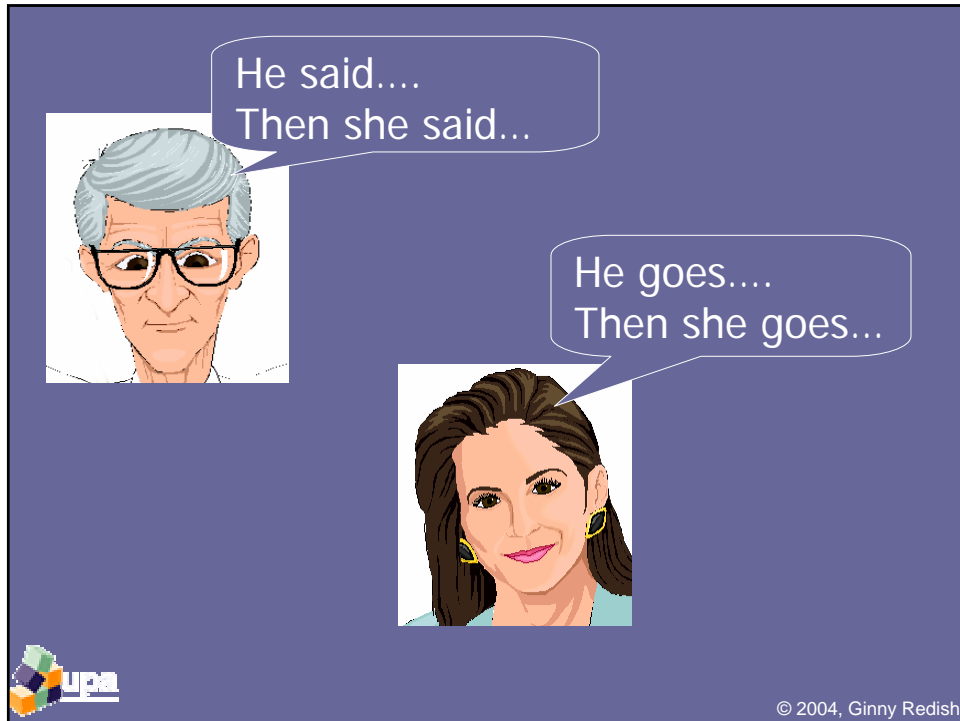


Yours, mine, and ours: Connecting ourselves and the communities we belong to  
Keynote, Usability Professionals' Association, June 2004

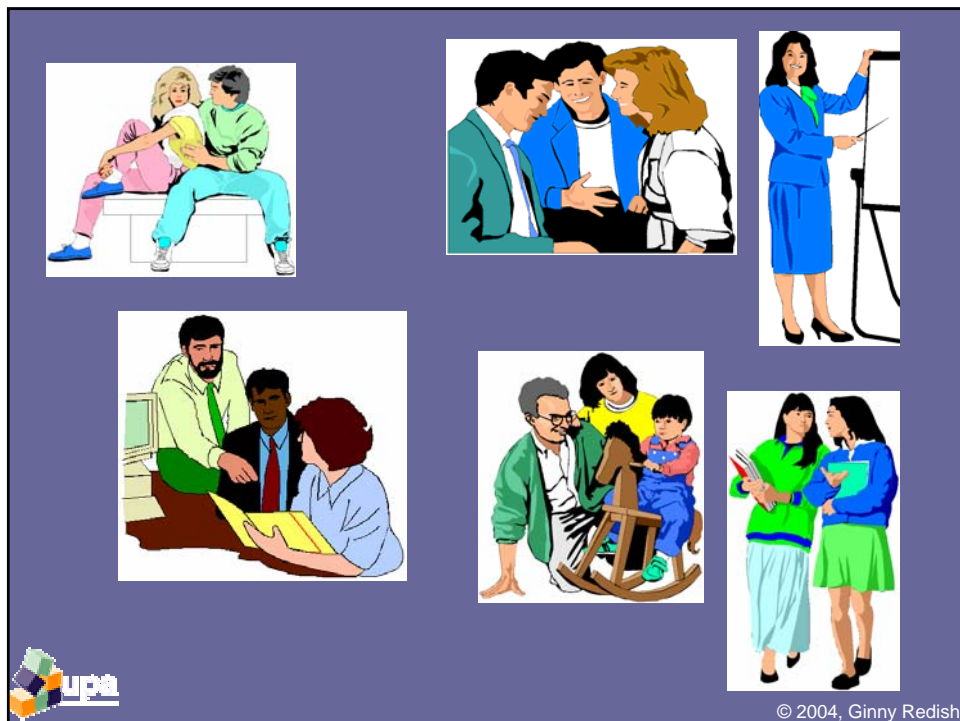
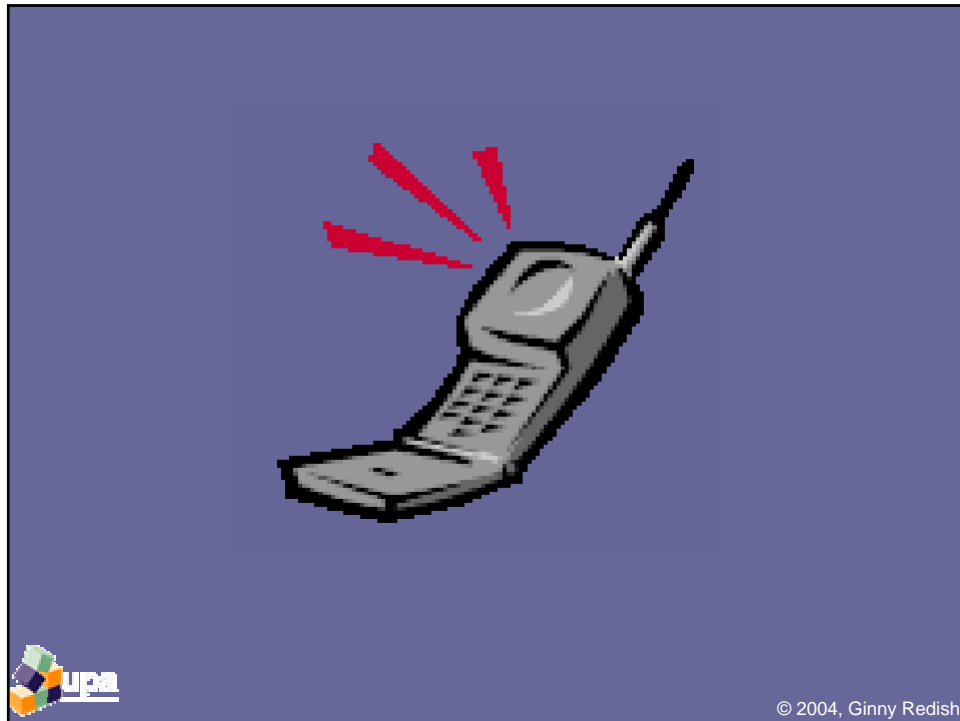
---

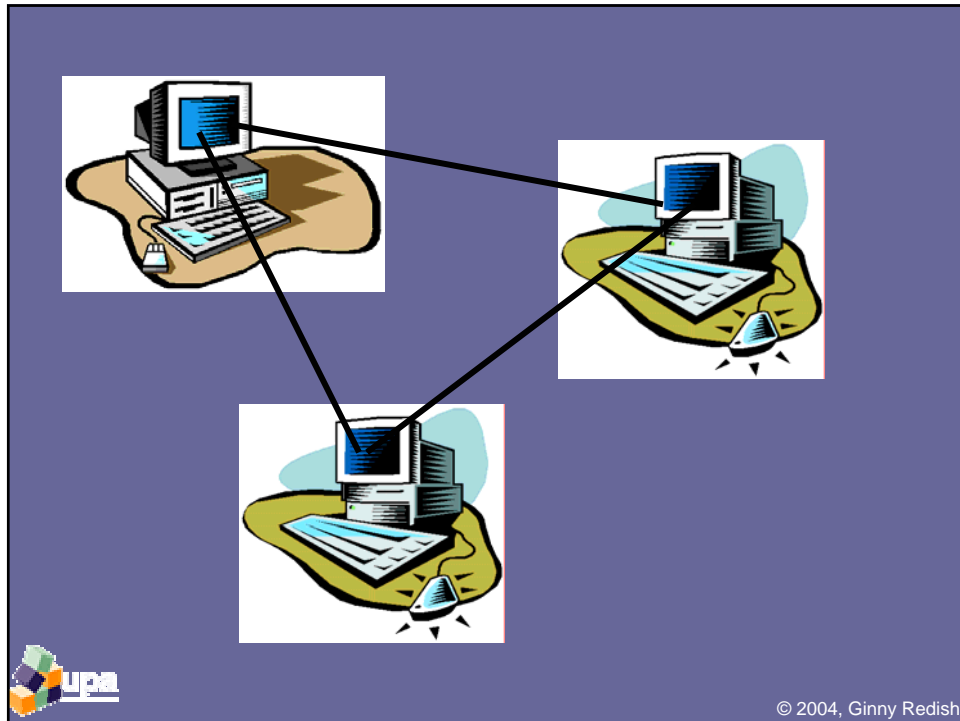














[http://www.cs.vu.nl/~eliens/  
onderwijs/multimedia/mmc/  
local/incca/images/interviews.jpg](http://www.cs.vu.nl/~eliens/onderwijs/multimedia/mmc/local/incca/images/interviews.jpg)

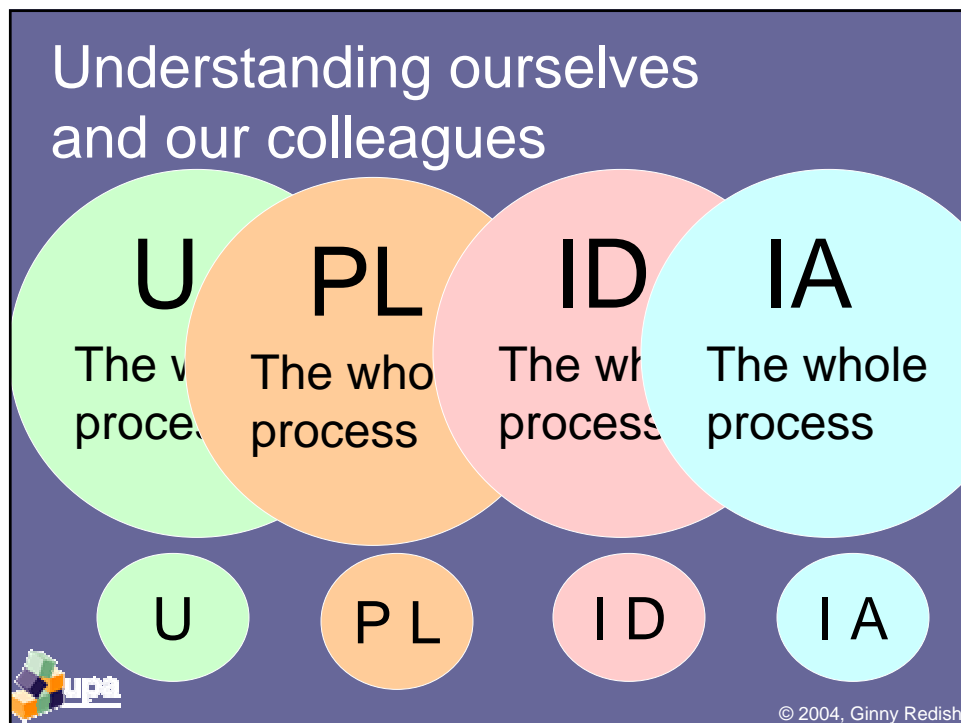
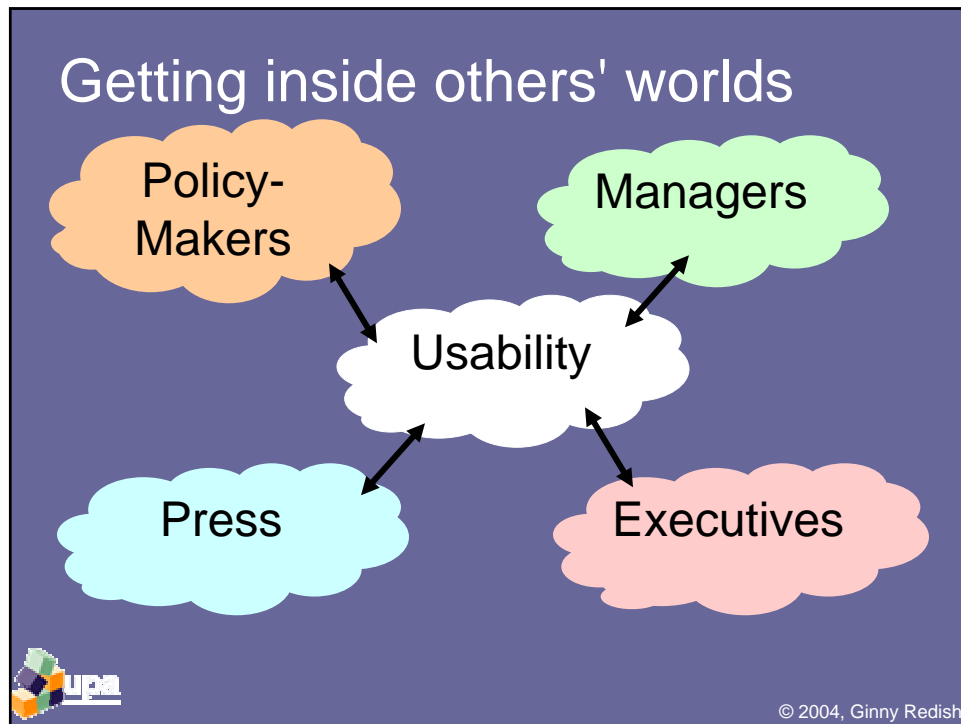


<http://www.cjolson.com/Usability.htm>  
C J Olson Market Research Company  
Minneapolis

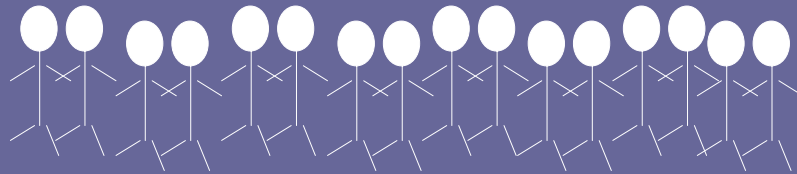


*That's Not What I Meant!*  
Deborah Tannen

© 2004, Ginny Redish

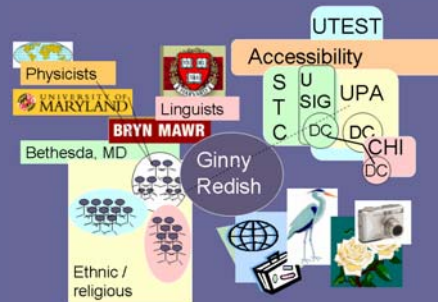


# Connecting communities: Reaching out Teaching Drawing others in



© 2004, Ginny Redish

Dr. Janice (Ginny) Redish  
Redish & Associates, Inc.  
+1 301 229 3039  
[ginny@redish.net](mailto:ginny@redish.net)  
[www.redish.net](http://www.redish.net)



© 2004, Ginny Redish